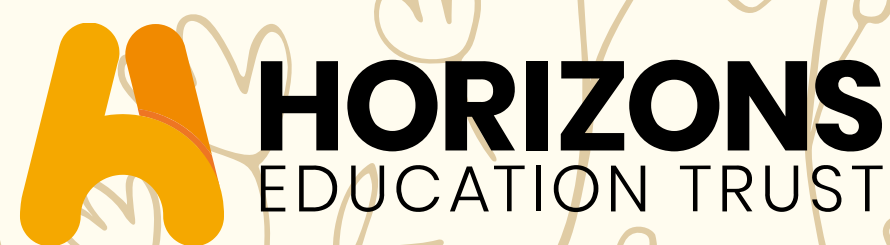


PRESTLEY POST

Spring Term 1 - 13.02.2026



Prestley Wood Academy



EDUCATE **EMPOWER** **ENRICH** **ENJOY**

A message from Caroline



Mak the Bear

Welcome to our Newsletter for the Spring 1 Term

Welcome to the February edition of The Prestley Post.

This edition is jam packed with some of the great activities which have happened this half term in and out of school alongside all the learning updates you receive on Earwig, our assessment-sharing tool. It gives you a flavour of the range of experiences which serve to strengthen not only our pupils' skills and confidence but also our connections within the wider community. You will see details of Prestley Wood's first ever overnight residential at Grafham Water, where pupils built real independence and lasting memories. Our Bikability sessions using our set of new balance bikes, bikes donated from the community and the adapted bikes on loan from Hinchingsbrooke park. Our student athletes all of whom represented the school brilliantly at the local Pantahlon competition. An exciting class opportunity to send items into space by NASA. The adventures of Mak the bear our Makaton mascot. PWA School Council working hand-in-hand with a neighbouring school on a joint project and also their preparation of our (hopefully abundant) allotment located in the town's community gardens. Our new I Avengers programme which helps pupils develop their understanding of online safety, an area always central to our safeguarding practice and one where partnership with families is vital. A truly community rich and inspiring half term.

There's lots more to look forward to in the next half term too, please pop those events in your diary, especially the family open class days. It's so lovely having the whole PWA community on site together.

Staff return to school for an INSET day on Monday 23rd February and Pupils return to school on Tuesday 24th February.

Wishing you and your family a happy break.

Caroline

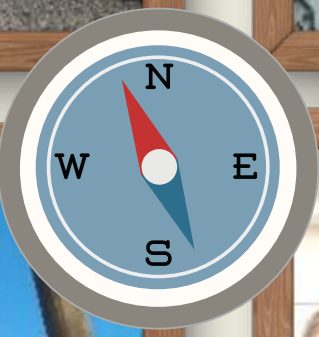
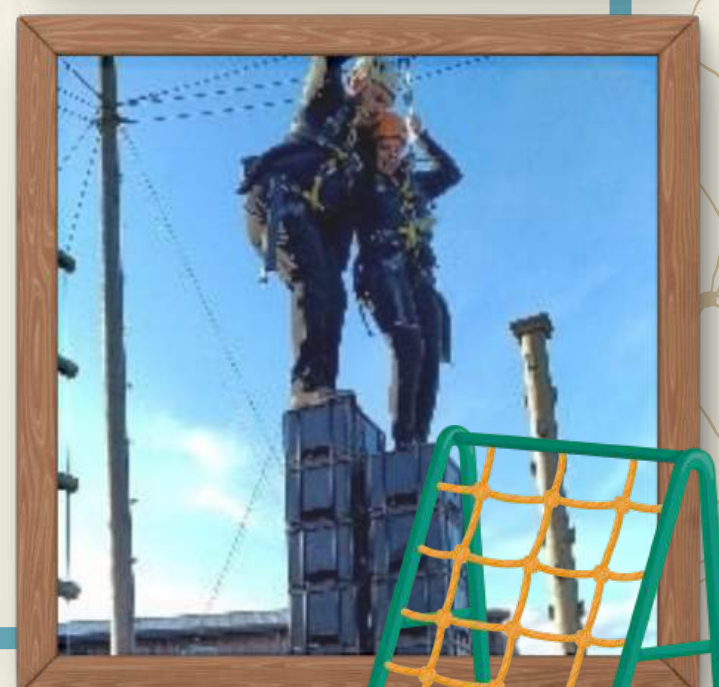
Mak the Bear, our school Makaton Mascot, has had a wonderful time visiting classes this term. He has joined learners in a variety of sensory and structured activities, creating meaningful opportunities for interaction, engagement, and shared attention. Mak also plays an important role in encouraging learners to explore and practise Makaton throughout their day, helping to build communication skills, emotional connection, and positive learning experiences across the school.

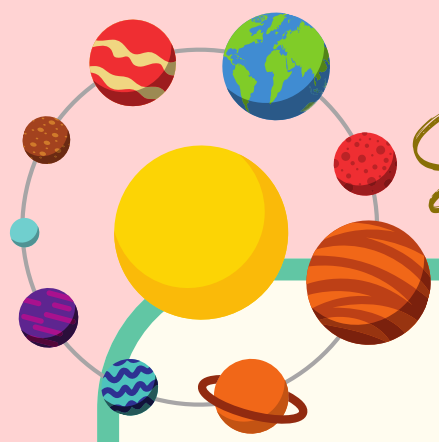


<https://www.prestleywood.org.uk/>

Grafham Water Residential

Sycamore learners took part in Prestley Wood's first ever residential trip this term, spending two exciting days at Grafham Water. They took part in a range of adventurous activities including rock climbing, sailing, and team-building challenges, showing great bravery and teamwork throughout. The overnight sleepover was a fantastic milestone, and learners approached it with enthusiasm and independence. We are incredibly proud of everyone who took part in this memorable adventure and look forward to many more in the future.





Space Travells

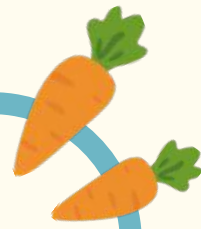


Magnolia Class have been exploring all things space!

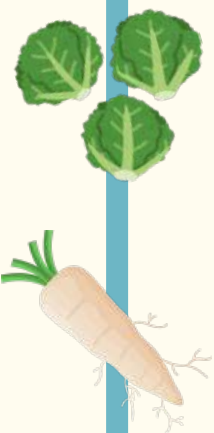
They've navigated the virtual ISS, compared planets, and investigated whether aliens might exist. The class were especially excited to learn about Artemis II, and we now have our own boarding pass, meaning Magnolia Class will join the astronauts on their journey around the Moon, at least in name!



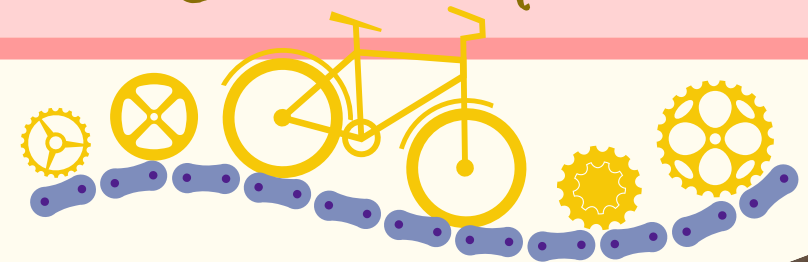
Allotment Exploration



Exploring the allotments, the School Councillors learned about plant growth, soil conditions, and how outdoor environments affect planting. They planted seeds during their visit and hope to grow food that can be used in school in the future. They will continue to observe the plants' development over time.

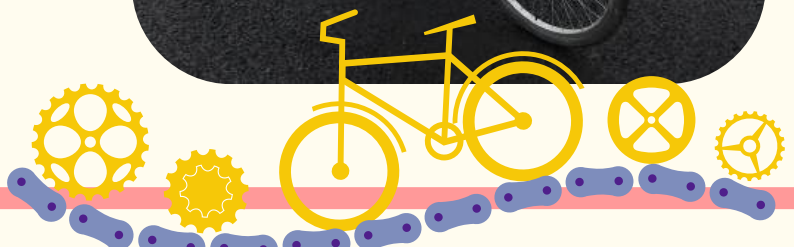


Pedals Comes to School



In an exciting turn of events, Hinchbrook Country Park has kindly loaned us two fantastic adapted bicycles! Combined with the fleet of bikes we already have in school, the pupils have had even more opportunities to practise and grow their cycling skills right here on site.

The extra cycling sessions have been a huge hit, filled with smiles, determination, and lots of cheering each other on. It's been wonderful to see our learners building confidence, improving coordination, and enjoying the freedom of being on two (or sometimes three!) wheels.



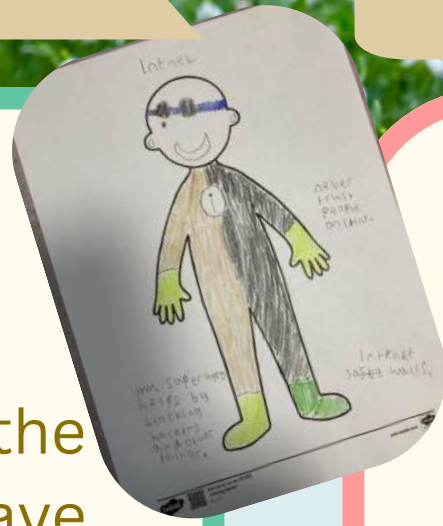
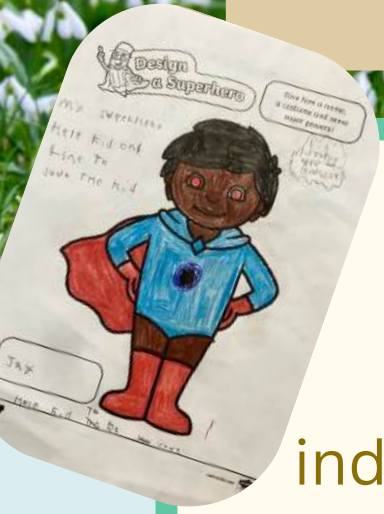
Forest School

This term, the children have been exploring forest school through a variety of sensory rich activities that support regulation, confidence, and learning. They've enjoyed mud kitchen play, sensory trays, cardboard den building and popcorn making over the fire pit.

We've seen fantastic progress in independence, communication, and emotional regulation as they follow their curiosity and learn at their own pace.



i-Vengers



At Prestley Wood , e-Safety is an important part of helping pupils develop independence and confidence in the digital world. As part of this, we have a pupil group called the I Vengers, who help promote simple,



clear online safety messages across the school and encourage their peers to make safe choices when using technology. Every class has created there own e-safety superhero that they will refer to regularly on our online journey!



Friends come to PWA



We were thrilled to welcome the School Councillors from Alconbury C of E Primary School to Prestley Wood Academy. The councillors had a fantastic time getting to know one another and exploring their similarities and differences through visual boards. From this, they worked together to create posters showcasing the unique qualities of each school. They also discussed ways the two schools can work together in the future, and we are delighted that PWA has been invited to visit their school next. We're already looking forward to the visit!



Panathlon



A group of our learners attended a Panathlon event at Hinchingsbrooke School. Panathlon activities provide competitive sports opportunities for children with special educational needs and disabilities (SEND), focusing on inclusion, personal development, and social interaction. All the pupils had the opportunity to try different activities, enjoying working as a team and socialising both with their own peers and children from other schools.



Growth - Our World

Our KS1 learners have been exploring plant care through a sensory 'watering the plants' activity. Using spray bottles on a painted tuff tray, they enjoyed watching the colours mix while building their understanding of growth, as well as fine-motor and sensory skills.



Save the Date! - Spring 2026



5/1 - Spring Term Opens

9/1 - Hep B - Second Vaccinations

22/1 - KS1/2 Panathalon Festival

23/1 - Parent/Carer Makaton Workshop (10-11am)

28/1-30/1 - Grafham Water Residential

3/2 - Parent/Carer SALT Workshop (2-3pm)

4/2 - Parent/Carer SALT Workshop (10-11am)

10/2 - Safer Internet Day

10/2 - Pancake Flipathon

16/2-20/2 - Half Term

23/2 - School Closed - Inset Day

24/2 - Pupils Back to School

5/3 - World Book Day

9/3 - Parent/Carer Coffee Afternoon with Guest (TBC) 2-3pm

17/3 - Parent/Carer Evening

20/3 - Red Nose Day & World Down Syndrome Day

23/3 - Autism Awareness Week

26/3 - Easter Enterprise Stall in the Community

27/3 - Parent/Carer Engagement Afternoon

27/3 - Last Day of Term

